

Road Closure

Drainage Works in Aspenden Road, Buntingford

We'll be undertaking investigations works between **London Road to Aspenden**

Between **18/01/21** and **19/01/21**

Works between **09:30** and **16:00**

Dear Resident,

We are writing to tell you about some works we'll be undertaking in your area.

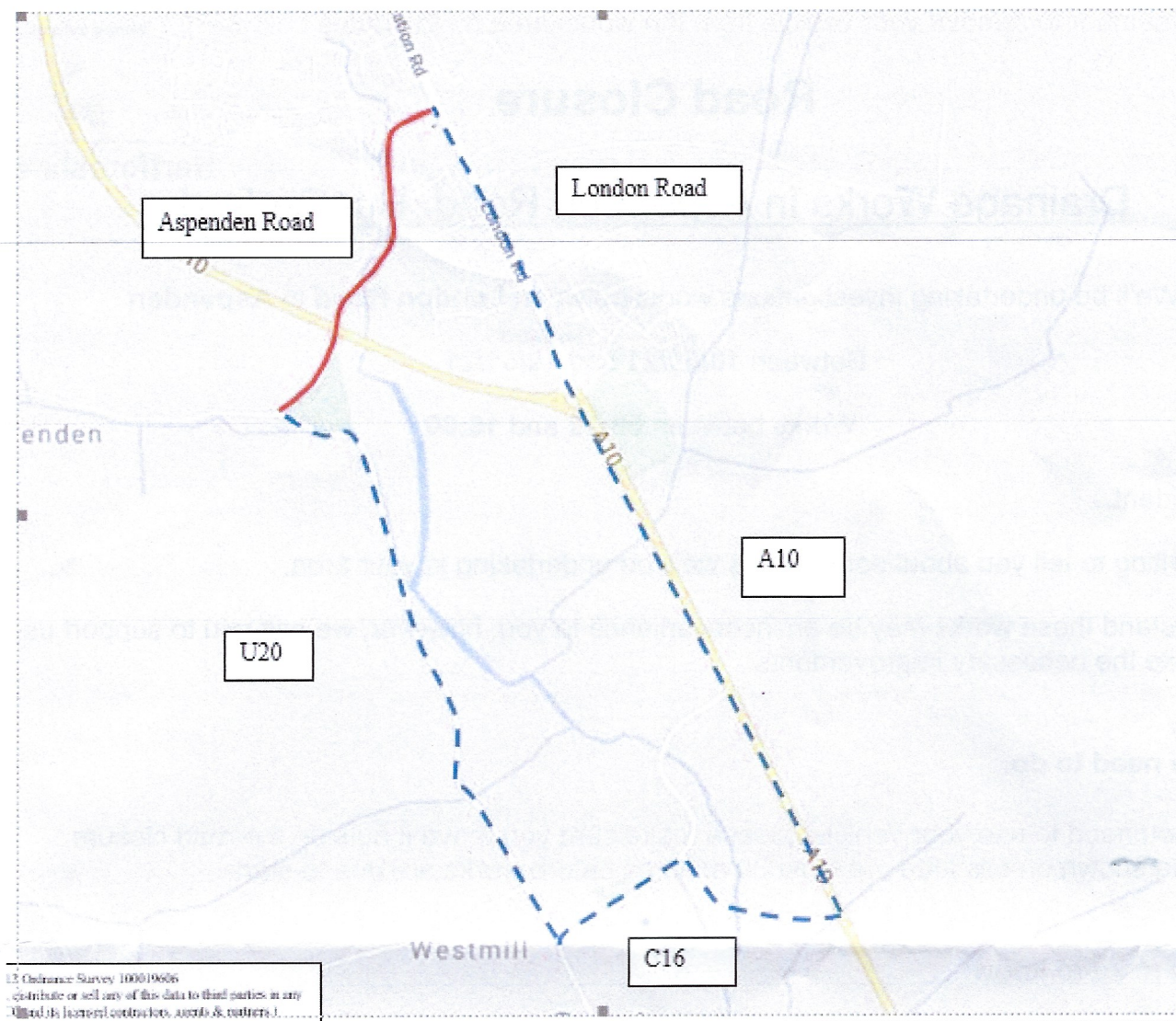
We understand these works may be an inconvenience to you, however, we ask you to support us as we make the necessary improvements.

What you need to do:

- If you need to use your vehicle, please make sure you move it outside the road closure area shown on this letter, at least 30 minutes before works are due to start.

What you need to know:

- We would like to reassure residents that we are following Government advice relating to construction works and guidelines regarding social distancing to minimise the risks related to Covid-19 (Coronavirus).
- We politely request that all residents respect our workforce and follow social distancing guidelines when passing the works area or engaging with our on-site team.
- **Vehicles may not be allowed access through the road closure during the works, except for emergency vehicles. We are unable to provide information on which part of the road will have access and when. Please speak to the on-site team on the day who will be able to advise on this.**
- Please refer to the yellow signboards at either end of your street to see the exact dates, timings and permit number. Any date changes to these works will be communicated on these yellow signboards and at www.hertfordshire.gov.uk/roadclosures
- These works are weather dependent and may be postponed if poor weather is forecast.
- Pedestrian access will be maintained during the works and all local businesses will be open as usual.



Further information:

- Details of any disruptions to bus services can be found at www.intalink.org.uk/timetables (search for your service). If you're unable to find this information, please call our customer service centre on 0300 123 4050.
- The permit number for these works is **BR6402000233896** full details can be found at www.one.network
- If you have any special needs or circumstances, please contact Ringway on our Customer Service Centre on 0300 123 4047 or email us at cshighways@Hertfordshire.gov.uk

Thank you in advance for your co-operation - your support is much appreciated.

**Hertfordshire County Council
Highways Service**

To hear live traffic information and news across Hertfordshire, please follow us on social.

